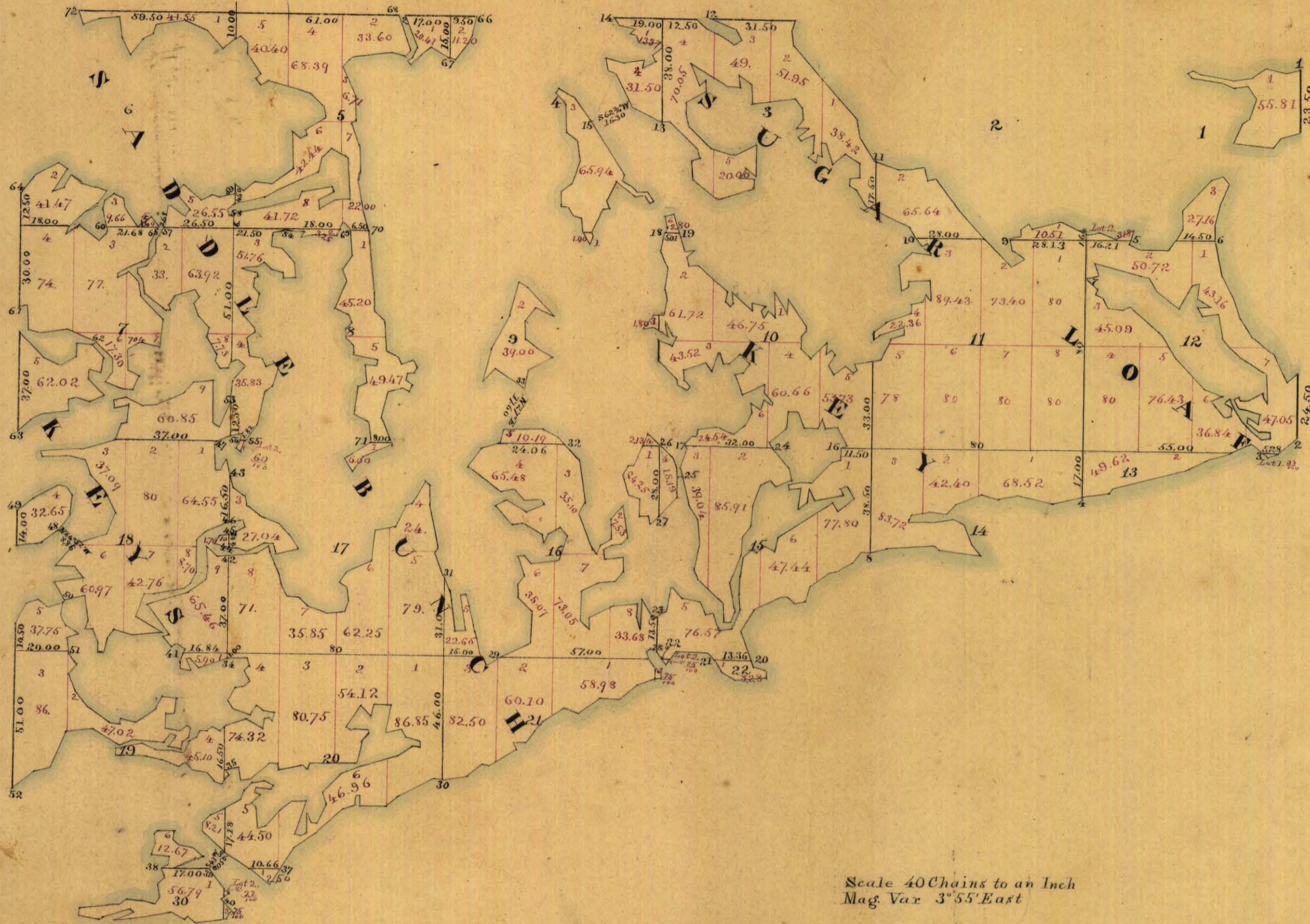


T 67 S R 27 E



Scale 40 Chains to an Inch
Mag. Var 3° 55' East

Area 5,219.41 Acres

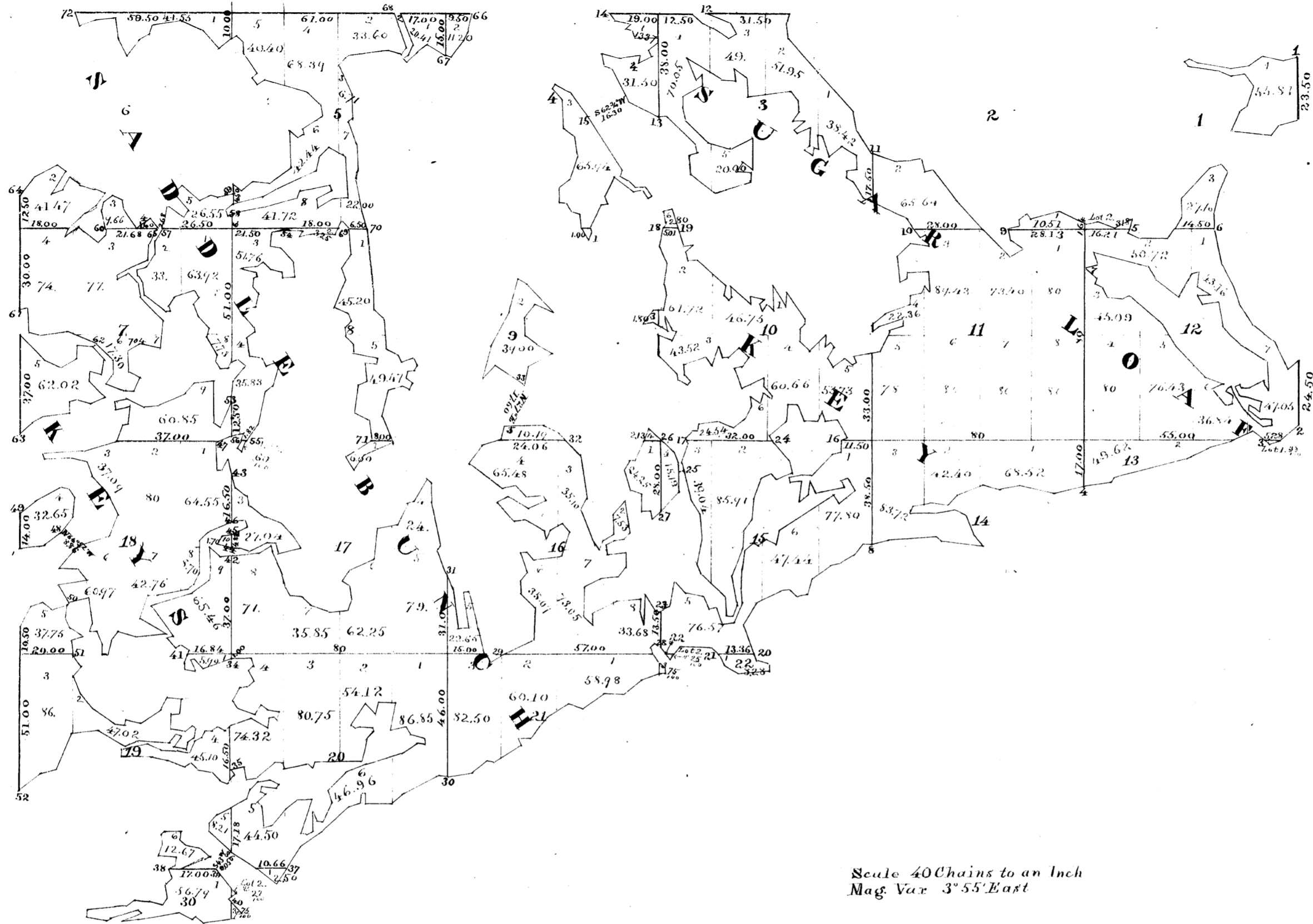
Surveys Designated	By Whom Surveyed	Date of Contract	Amount of Surveys	When Surveyed
N & W Boundaries			4 ^{mi} 47 ^{ch} 00 ^{ac}	
Subdivisions	Chas. F. Smith	Nov. 20 th 1872	15 22 69	April 1873
Meanders			87 60 89	
Triangulations			0 51 81	

The above Map of Township 67 South Range 27 East is strictly conformable to the field notes of the survey thereof on file in this Office, which have been examined and approved.
Surveyor General's Office
Tallahassee Florida

January 21st 1876

Wm. Ray W. Wall
Surv. Genl.

T 67 S R 27 E



Scale 40 Chains to an Inch
Mag. Var 3° 55' East

Area 5,219.41 Acres

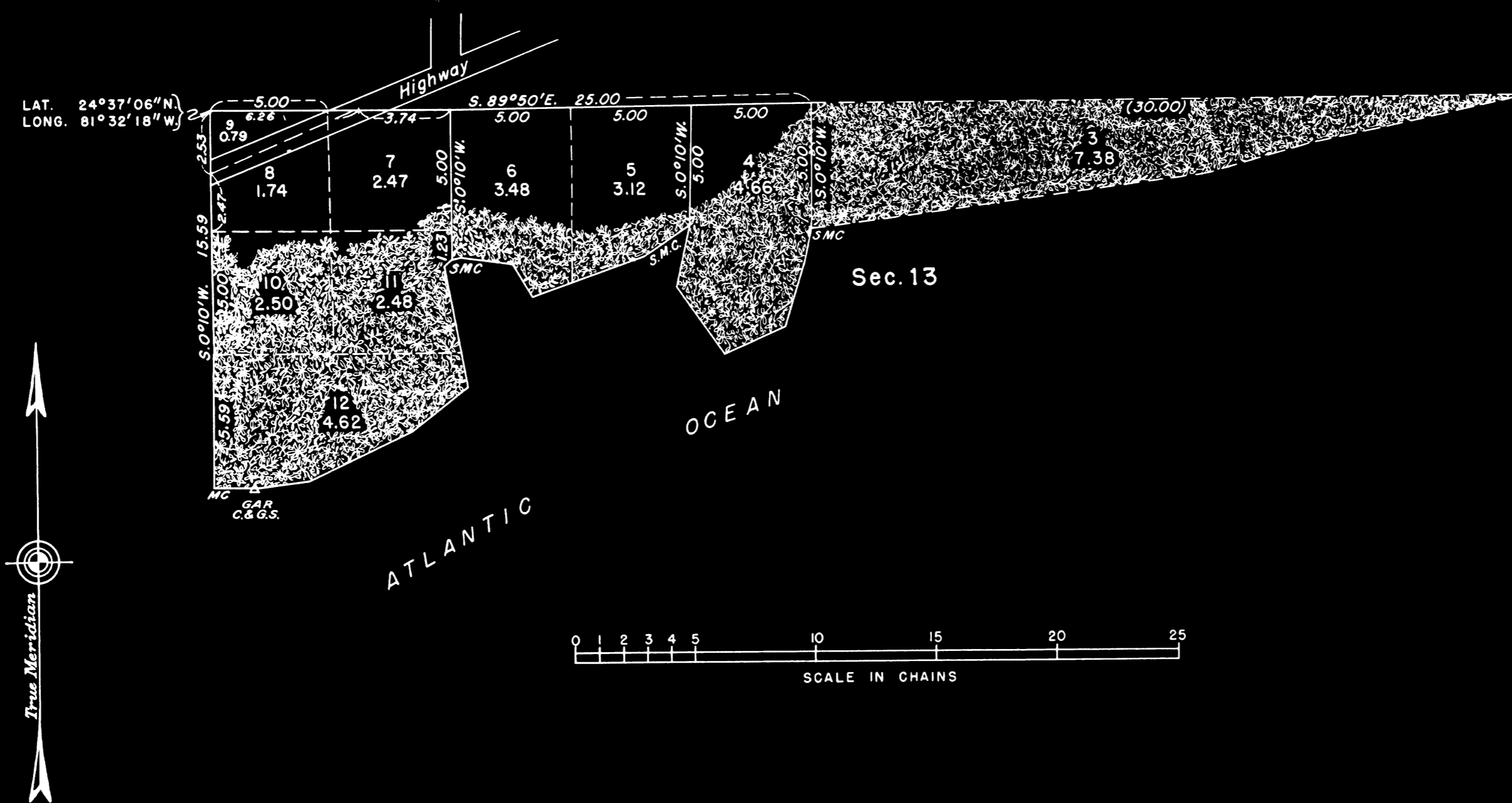
Survey Designated	By Whom Surveyed	Date of Contract	Amount of Surveys	When Surveyed
N&W Boundaries			4 ⁷ / ₈	00 ² / ₈
Subdivisions	Chas. F. Smith	Nov. 20 th 1872	15	22
Meanders			87	60
Triangulations			0	51
				81

The above Map of Township 67 South Range 27 East is strictly conformable to the field notes of the survey thereof on file in this Office, which have been examined and approved.
Surveyor General's Office
Tallahassee Florida

January 21st 1876

LeRoy H. Wall
Surv. Genl.

TOWNSHIP 67 SOUTH, RANGE 27 EAST, OF THE TALLAHASSEE MERIDIAN, FLORIDA
 DEPENDENT RESURVEY AND SUBDIVISION OF ORIGINAL LOT 2, SECTION 13



Dependent resurvey and subdivision of sec. 13, to define the boundaries of small tracts in a portion of original lot 2, for administration under the provisions of the Act of June 1, 1938, as amended (52 Stat. 609; 43 U.S.C., sec. 682a), executed by Oscar B. Walsh, Cadastral Engineer, from April 5 to April 15, 1949, under special instructions for Group 107, Florida, dated February 4, 1949.

Area Resurveyed: 33.24 Acres

UNITED STATES DEPARTMENT OF THE INTERIOR
 BUREAU OF LAND MANAGEMENT

Washington, D. C., December 7, 1949

This plat is strictly conformable to the approved field notes, and the survey, having been correctly executed in accordance with the requirements of law and the regulations of this Bureau, is hereby accepted.

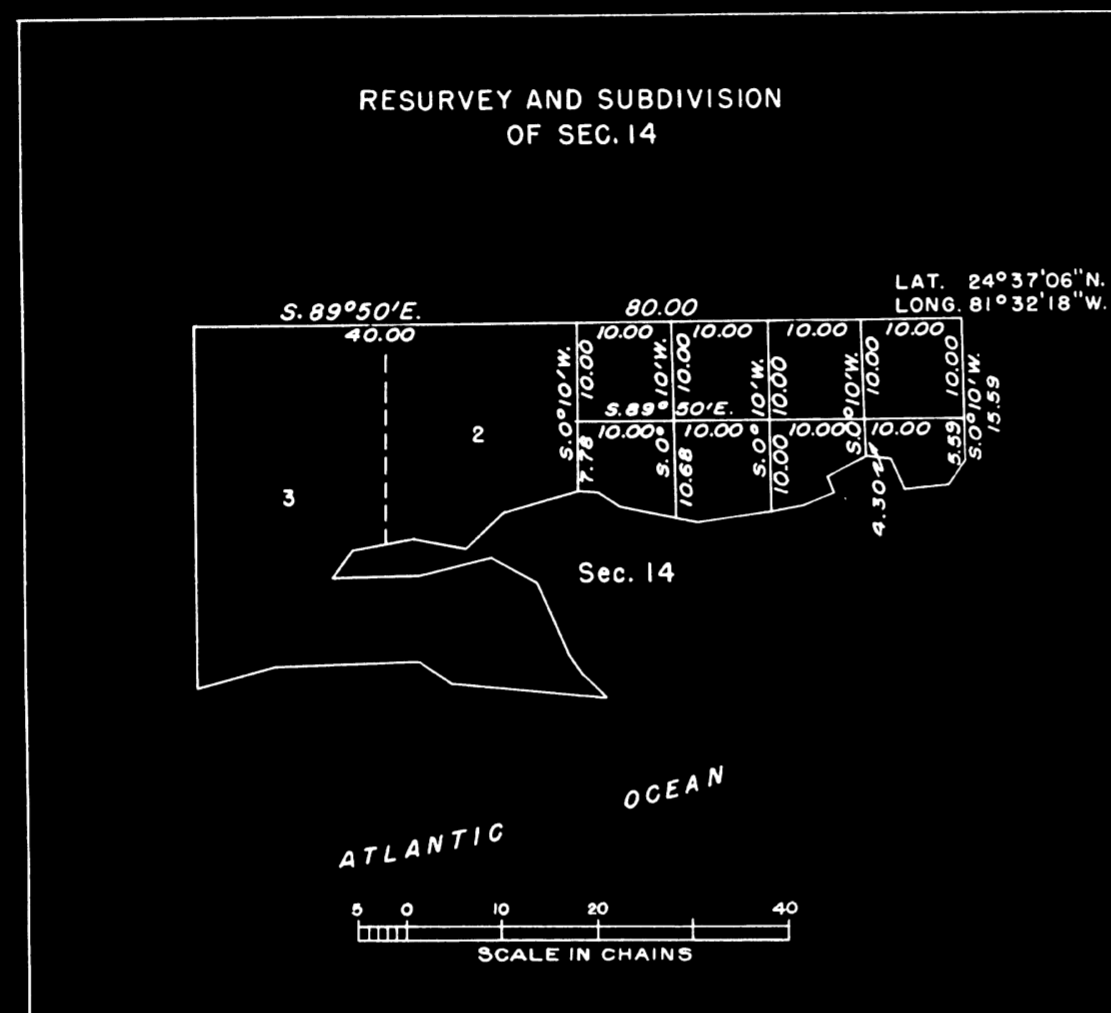
For the Director:

William F. Richard

Chief, Branch of Surveys

TOWNSHIP 67 SOUTH, RANGE 27 EAST, OF THE TALLAHASSEE MERIDIAN, FLORIDA

DEPENDENT RESURVEY AND SUBDIVISION, SECTION 14



SUBDIVISION OF LOT 1, SECTION 14



Dependent resurvey and subdivision of sec. 14, to define the boundaries of small tracts in original lot 1, for administration under the provisions of the Act of June 1, 1938, as amended (52 Stat. 609; 43 U.S.C., sec. 682a), executed by Oscar B. Walsh, Cadastral Engineer, from April 5 to April 15, 1949, under special instructions for Group 107, Florida, dated February 4, 1949.

Area Resurveyed: 73.63 Acres

UNITED STATES DEPARTMENT OF THE INTERIOR
BUREAU OF LAND MANAGEMENT
Washington, D. C., December 7, 1949

This plat is strictly conformable to the approved field notes, and the survey, having been correctly executed in accordance with the requirements of law and the regulations of this Bureau, is hereby accepted.

For the Director
William F. Cochran
Chief, Branch of Surveys

